

## June/July 2015

# IN THIS ISSUE...



### Inspirational kitchen stories

**21 GALIC CHARM** A pure white palette and French-inspired furniture strike an elegant note in this beautiful bespoke design

**30 CURVE APPEAL** Clever craftsmanship and a fluid layout makes the most of the available space in a compact corner kitchen

**37 TRÉS CHIC** How one couple created a kitchen befitting of its glamorous Parisian location

**50 AMAZING GREYS** Style and substance was the order of the day for this simply chic scheme

**57 PLANNED TO PERFECTION** It may have been a long time coming, but this spacious and

luxurious family kitchen was well worth the wait

**64 GUIDING LIGHT** Giving their designer free rein yielded dazzling results for one couple

**108 BEST OF BOTH WORLDS** Rugged concrete surfaces are paired with ethnic and antique pieces in this edgy urban chic creation

**114 SECOND CHANCE** Past experience proved invaluable when the time came for this growing family to upgrade their kitchen again

**119 UNIQUE ANGLE** Dynamic lighting and a sculpted central island are the standout stars of this wonderfully original design

#### Key to floorplans

-  Fridge and/or freezer
-  Microwave
-  Dryer
-  Washing machine
-  Dishwasher

# Gallic CHARM

Only a truly bespoke scheme would help Leo Haynes achieve the sophisticated French kitchen she had long desired

Feature **ALEX O'NEILL**  
Photography **RICHARD GADSBY**

## *In a row*

These French-inspired bar stools, designed by Leo and made by Charlie Kingham, set the elegant tone for the rest of the kitchen



**Project profile**

**THE OWNERS** Leo Haynes, owner of nursery furniture and accessories shop Piccoli & Co, and her husband Max, who runs a fashion company

**THEIR HOME** A semi-detached Victorian house in southwest London

**THE PROJECT** An internal wall and some pillars were removed to

make way for a open plan bespoke kitchen diner

**ROOM SIZE** 7 x 3.6m

**DESIGNER** Charlie Kingham

**CABINETS** Bespoke handpainted units by Charlie Kingham, £35,000

**BUDGET** Around £50,000

**Light show**  
A generous addition to a kitchen scheme, this antique chandelier makes a dramatic statement



**On fire**  
The stylish La Cornue range cooker not only enhances the overall design, it's perfect when hosting dinner parties



**Raising the bar**  
Leo chose a sleek Canara marble worktop, which brings a sense of occasion to breakfast time

**I**t was a cute kitchen, says Leo Haynes of the previous scheme in her Victorian home, 'but I wanted something grander.' Judging by the white and cream space furnished with French antiques, which replaced her Shaker-style design, Leo is a woman who gets what she wants. 'It took a few years to convince my husband, but eventually he agreed,' she laughs.

Originally from Tuscany, former antiques dealer Leo often travelled to Provence and fell for its chic yet relaxed interiors. As a result, she had a clear vision for her dream kitchen. 'I was after a French apothecary feel, but I also love the big white American designs. I wanted the sort of scheme you see in the movies, but with French style cabinetry.'

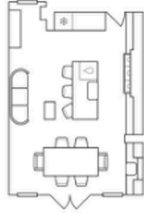
Tasked with the challenge of creating such a unique scheme was bespoke kitchen designer

Charlie Kingham. Leo showed Charlie pictures from magazines, and insisted on an all white palette to complement the rest of the house. 'It's very unusual to have a white kitchen,' she explains. 'But I wanted something different.'

While Charlie was working his magic, Leo scoured vintage and antiques shops, and reclamation yards for furniture that would do her scheme justice. For the glass cabinets, she salvaged metal parts from some French windows and asked Charlie to incorporate them into the cabinetry.

The project took several months to complete and Leo is delighted with the result. 'The layout is a lot better than before,' she says. 'It's the same size, but there's much more room.' Her favourite aspect is the sash windows and French doors. 'I keep them open all the time in summer. It's such a lovely space.'

**The layout**





**Table manners**  
Larger seating takes  
up the end  
of the dining table,  
making a casual use

**DESIGN SOLUTION** *Designer Charlie Kingham explains...*

**What was the brief?**

French-style cabinetry was a must. Leo wanted a sophisticated, all-white look. Everything, down to the cabinetry handles, bolts and mouldings, was meticulously sourced for an authentic feel.

**Was there any structural work involved?**

Yes. The new scheme was to be in the same space of the existing kitchen, so we had to find the most practical layout. The final design was completely different, so we had to knock down a wall and some pillars. The old arrangement wasn't working for Leo as the island was too far away from the work zones and he didn't want the washing

machine and dryer too close to the cooking space, so we created a separate utility area.

**Describe the materials used**

All our materials are manufactured in the UK and then constructed in our workshop in Suffolk. We also sourced antique pieces to create a French look. We used Carrara marble for the worktops, with profile added to the edge. Our cabinetry is made using tulipwood, which is rarely found in its natural state, but is popular thanks to its durable qualities, as well as being brilliant to handpaint. An oak worktop was installed in the utility area to create a subtle distinction between the two zones.

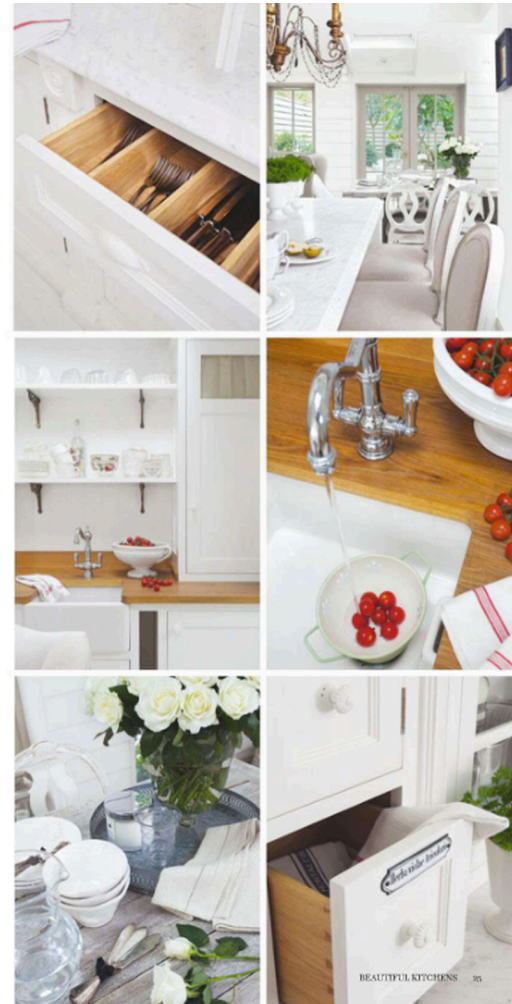
**Tell us about the pantry**

This built-in unit was designed to complement the wall cabinets either side of the range cooker. It not only enhances the overall aesthetic, it's also a functional piece that stands up to the rigours of life in a modern kitchen.

**What makes this kitchen special?**

The beauty of this scheme is that we were able to repurpose salvaged gems and house them in an elegant bespoke design. The scheme is a mixture of everything: vintage, French, unique mouldings and handles, and then you have Leo's design input, too. It's just very fresh and original.

'I'M TOO BUSY AT WORK TO ENTERTAIN REGULARLY, BUT WHEN WE DO HAVE PEOPLE OVER FOR DINNER, THIS IS THE PERFECT PLACE TO HOST THEM BECAUSE OF ITS SOCIABLE, OPEN-PLAN DESIGN'



**CLOCKWISE FROM TOP LEFT**

**Finishing touches**

Even the smallest of details were chosen to complement the overall design and colour palette

**On tap**

As per Leo's request, Charlie created a separate utility area complete with a small Belfast sink, laundry facilities and a place to hide the boiler

**Vintage appeal**

Leo trawled the internet for these 19th-century apothecary labels, which introduce warmth and charm



**Food glorious food**

A generously sized built-in pantry combines chic style with utility

**The details**

**CABINETS** Bespoke units, £35,000, Charlie Kingham, handpainted in Wimborne estate eggshell, £53 for 2.5 litres, Farrow & Ball

**SURFACES** Carrara honed marble worktop with DuPont edge scribed profile, around £85sq m; bespoke full stave European oak worktop with Danish oil finish, around £200sq m, both Charlie Kingham

**APPLIANCES** Range cooker, £4,700, La Cornue. Extractor fan, £270; integrated fridge, £950, both Bosch. Freezer drawer, £1,400, Fisher Paykel

**SINKS AND TAPS** Antique white double Belfast sink and tap, £500, Perrin & Rowe. Ceramic Belfast sink, £240, Shaws of Darwen, has this look. Bayenne monobloc mixer tap, £229, Abode, is identical to this one. Classic boiling water tap, £783, Quooker

**FINISHING TOUCHES** Chandelier, around £150; dining table and chairs, around £1,500, all Les Sardines. Wesley-Barrell's Hardrick chair in Naunton, from £1,330, is comparable to the armchairs. Sophie Conran's tableware for Portmeirion, from £11 for a mug, John Lewis, would suit this look. LSA light flared storm clear lantern, £48, Heal's, is a match. For similar antique cutlery, from £6 for a teaspoon, try Jennifer's Cutlery. Perlee footed vase, around £338, L'Objet, would work in this scheme

**'AN ALL-WHITE KITCHEN ISN'T EASY TO KEEP CLEAN. IT NEEDS A LOT OF CARE AND ATTENTION, BUT IT'S WORTH IT'**

*For stockist details go to page 150*